

# Test Report

No. NGBEC2102804501

Date: 16 Jun 2021

Page 1 of 5

WENZHOU LONYOU ELECTRIC CO.,LTD

DONGHUANGYU VILLAGE, LIUSHI TOWN, YUEQING CITY, ZHEJIANG PROVINCE, CHINA

The following sample(s) was/were submitted and identified on behalf of the clients as : 201 STAINLESS STEEL BANDING & BUCKLE

SGS Job No. : NP21-002996 - NB  
 Model No. : 5/8"(16.0mm)  
 Material No. : 201  
 Client Ref. Information : 1/4"(6.4mm), 3/8"(9.5mm), 1/2"(12.7mm), 3/4"(19.0mm), 1"(25.0mm), 1-1/4"(32.0mm)  
 Date of Sample Received : 10 Jun 2021  
 Testing Period : 10 Jun 2021 - 16 Jun 2021  
 Test Requested : Selected test(s) as requested by client.  
 Test Method : Please refer to next page(s).  
 Test Results : Please refer to next page(s).  
 Conclusion : Based on the performed tests on submitted sample(s), the results of Lead, Mercury, Cadmium, Hexavalent chromium comply with the limits as set by RoHS Directive (EU) 2015/863 amending Annex II to Directive 2011/65/EU.

Signed for and on behalf of  
 SGS-CSTC Standards Technical Services Co., Ltd. Ningbo Branch

*Kell Li*

Kell Li  
 Approved Signatory

scan to see the report



NGBEC2102804501



SGS-CSTC Standards Technical Services Co., Ltd.  
 Ningbo Branch Chemical Laboratory

Unless otherwise agreed in writing, this document is issued by the Company subject to its General Conditions of Service printed overleaf, available on request or accessible at <http://www.sgs.com/en/Terms-and-Conditions.aspx> and, for electronic format documents, subject to Terms and Conditions for Electronic Documents at <http://www.sgs.com/en/Terms-and-Conditions/Terms-e-Document.aspx>. Attention is drawn to the limitation of liability, indemnification and jurisdiction issues defined therein. Any holder of this document is advised that information contained hereon reflects the Company's findings at the time of its intervention only and within the limits of Client's instructions, if any. The Company's sole responsibility is to its Client and this document does not exonerate parties to a transaction from exercising all their rights and obligations under the transaction documents. This document cannot be reproduced except in full, without prior written approval of the Company. Any unauthorized alteration, forgery or falsification of the content or appearance of this document is unlawful and offenders may be prosecuted to the fullest extent of the law. Unless otherwise stated the results shown in this test report refer only to the sample(s) tested.  
 Attention: To check the authenticity of testing /inspection report & certificate, please contact us at telephone: (86-755) 8307 1443, or email: [CN.Doccheck@sgs.com](mailto:CN.Doccheck@sgs.com)

No.1177, Lingyun Road, Hi-Tech Zone, Ningbo, Zhejiang, China 315040 tE&E (86-574)89070249  
 中国·浙江·宁波高新区凌云路1177号 邮编: 315040 tHL (86-574)89070271 tML (86-574)89070242 sgs.china@sgs.com

[www.sgs.com](http://www.sgs.com)  
[sgs.china@sgs.com](mailto:sgs.china@sgs.com)

## Test Report

No. NGBEC2102804501

Date: 16 Jun 2021

Page 2 of 5

Test Results :

Test Part Description :

Specimen No.	SGS Sample ID	Description
SN1	NGB21-028045.001	Silvery metal

Remarks :

- (1) 1 mg/kg = 0.0001%
- (2) MDL = Method Detection Limit
- (3) ND = Not Detected ( < MDL )
- (4) "-" = Not Regulated

### RoHS Directive (EU) 2015/863 amending Annex II to Directive 2011/65/EU

Test Method : With reference to IEC 62321-4:2013+AMD1:2017, IEC62321-5:2013 and IEC 62321-7-1:2015, analyzed by ICP-OES and UV-Vis.

Test Item(s)	Limit	Unit	MDL	001
Cadmium (Cd)	100	mg/kg	2	ND
Lead (Pb)	1000	mg/kg	2	ND
Mercury (Hg)	1000	mg/kg	2	ND
Hexavalent Chromium (Cr(VI))▼	-	µg/cm <sup>2</sup>	0.10	ND

Notes :

- (1) The maximum permissible limit is quoted from RoHS Directive (EU) 2015/863.
- (2) IEC 62321 series is equivalent to EN 62321 series  
[https://www.cenelec.eu/dyn/www/f?p=104:30:1742232870351101:::FSP\\_ORG\\_ID,FSP\\_LANG\\_ID:1258637,25](https://www.cenelec.eu/dyn/www/f?p=104:30:1742232870351101:::FSP_ORG_ID,FSP_LANG_ID:1258637,25).
- (3) ▼ = a. The sample is positive for Cr(VI) if the Cr(VI) concentration is greater than 0.13 µg/cm<sup>2</sup>. The sample coating is considered to contain Cr(VI)  
b. The sample is negative for Cr(VI) if Cr(VI) is ND (concentration less than 0.10 µg/cm<sup>2</sup>). The coating is considered a non-Cr(VI) based coating  
c. The result between 0.10 µg/cm<sup>2</sup> and 0.13 µg/cm<sup>2</sup> is considered to be inconclusive - unavoidable coating variations may influence the determination  
Information on storage conditions and production date of the tested sample is unavailable and thus Cr(VI) results represent status of the sample at the time of testing.



SGS-CS Standards Technical Services Co., Ltd.  
Ningbo Branch Chemical Laboratory

Unless otherwise agreed in writing, this document is issued by the Company subject to its General Conditions of Service printed overleaf, available on request or accessible at <http://www.sgs.com/en/Terms-and-Conditions.aspx> and, for electronic format documents, subject to Terms and Conditions for Electronic Documents at <http://www.sgs.com/en/Terms-and-Conditions/Terms-e-Documents.aspx>. Attention is drawn to the limitation of liability, indemnification and jurisdiction issues defined therein. Any holder of this document is advised that information contained hereon reflects the Company's findings at the time of its intervention only and within the limits of Client's instructions, if any. The Company's sole responsibility is to its Client and this document does not exonerate parties to a transaction from exercising all their rights and obligations under the transaction documents. This document cannot be reproduced except in full, without prior written approval of the Company. Any unauthorized alteration, forgery or falsification of the content or appearance of this document is unlawful and offenders may be prosecuted to the fullest extent of the law. Unless otherwise stated the results shown in this test report refer only to the sample(s) tested.  
Attention: To check the authenticity of testing / inspection report & certificate, please contact us at telephone: (86-755) 8307 1443, or email: [CN.Doccheck@sgs.com](mailto:CN.Doccheck@sgs.com)

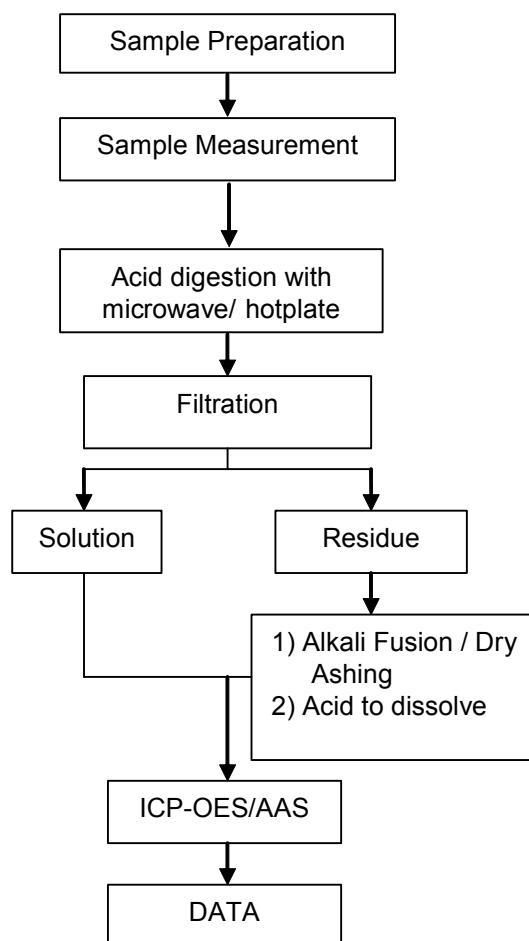
No.1177, Lingyun Road, Hi-Tech Zone, Ningbo, Zhejiang, China 315040 tE&E (86-574)89070249  
中国·浙江·宁波高新区凌云路1177号 邮编: 315040 tHL (86-574)89070271 tML (86-574)89070242 sgs.china@sgs.com

[www.sgsgroup.com.cn](http://www.sgsgroup.com.cn)  
[sgs.china@sgs.com](mailto:sgs.china@sgs.com)

### ATTACHMENTS

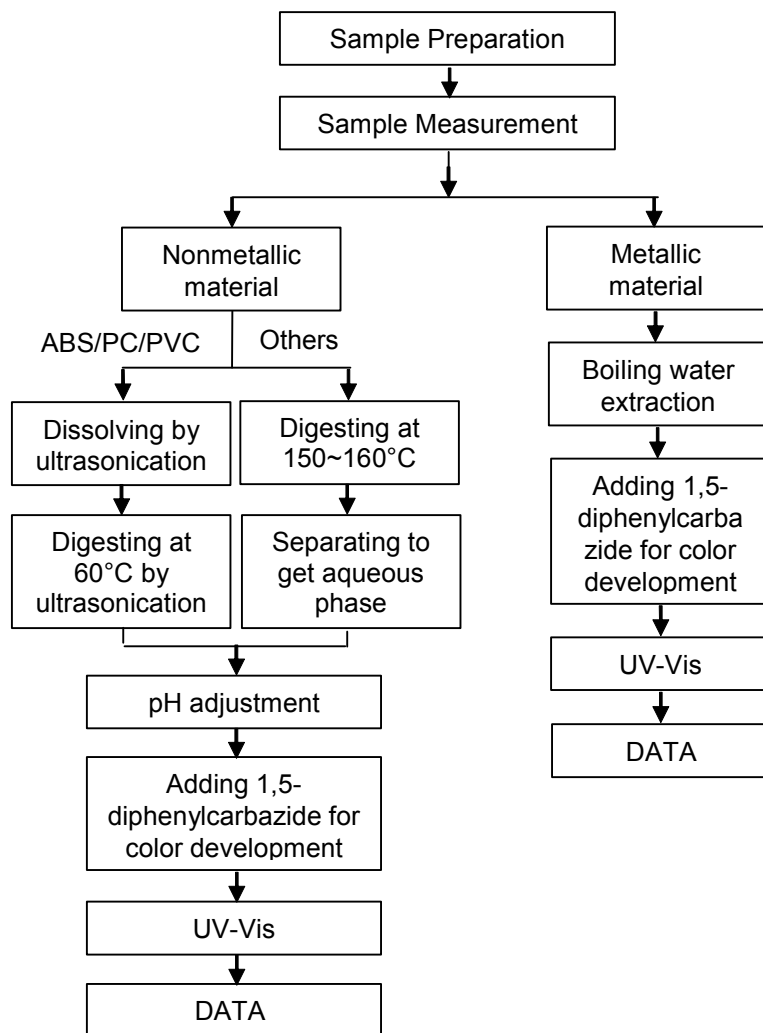
#### Elements (IEC62321) Testing Flow Chart

1) These samples were dissolved totally by pre-conditioning method according to below flow chart.



## ATTACHMENTS

### Hexavalent Chromium (Cr(VI)) Testing Flow Chart





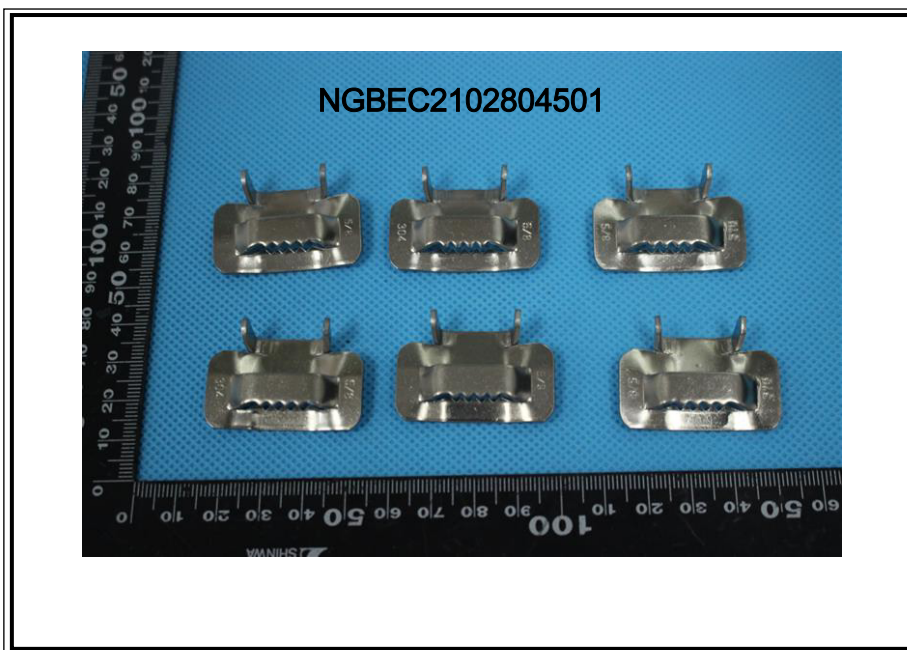
## Test Report

No. NGBEC2102804501

Date: 16 Jun 2021

Page 5 of 5

Sample photo:



SGS authenticate the photo on original report only

\*\*\* End of Report \*\*\*



SGS-CS Standards Technical Services Co., Ltd.  
Ningbo Branch Chemical Laboratory

Unless otherwise agreed in writing, this document is issued by the Company subject to its General Conditions of Service printed overleaf, available on request or accessible at <http://www.sgs.com/en/Terms-and-Conditions.aspx> and, for electronic format documents, subject to Terms and Conditions for Electronic Documents at <http://www.sgs.com/en/Terms-and-Conditions/Terms-e-Document.aspx>. Attention is drawn to the limitation of liability, indemnification and jurisdiction issues defined therein. Any holder of this document is advised that information contained hereon reflects the Company's findings at the time of its intervention only and within the limits of Client's instructions, if any. The Company's sole responsibility is to its Client and this document does not exonerate parties to a transaction from exercising all their rights and obligations under the transaction documents. This document cannot be reproduced except in full, without prior written approval of the Company. Any unauthorized alteration, forgery or falsification of the content or appearance of this document is unlawful and offenders may be prosecuted to the fullest extent of the law. Unless otherwise stated the results shown in this test report refer only to the sample(s) tested.

Attention: To check the authenticity of testing / inspection report & certificate, please contact us at telephone: (86-755) 8307 1443, or email: [CN.Doccheck@sgs.com](mailto:CN.Doccheck@sgs.com)

No.1177, Lingyun Road, Hi-Tech Zone, Ningbo, Zhejiang, China 315040 tE&E (86-574)89070249  
中国·浙江·宁波高新区凌云路1177号 邮编: 315040 tHL (86-574)89070271 tML (86-574)89070242 [sgs.china@sgs.com](mailto:sgs.china@sgs.com)

[www.sgsgroup.com.cn](http://www.sgsgroup.com.cn)